

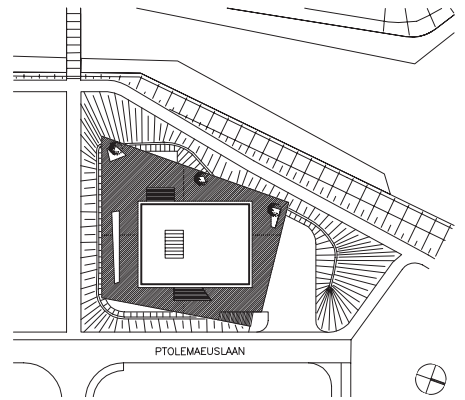
乌得勒支的 Axians 办公楼

Axians Office, Utrecht

建筑师：Architectenbureau Hoogeveen
bv, Amstelveen; Arjen Hoogeveen,
Mark Westerhuis, Arjen Westerhuis, Erik
Grootveld

工程师：Van der Vorm engineering bv,
Maarssen

竣工时间：2008.8



总平面图
比例 1:2000
Site plan
Scale 1:2000



这座简约而明亮的办公楼位于一块景色迷人但窄仄蹙脚的不规则四边形地块上。设计的主旨是使周边景观、停车场、地下室和停车场楼面板融为一体。这就意味着整座建筑将“漂浮”于“绿色基底”之上，而车辆则将隐匿于景观中。

鉴于工期紧迫，建筑师采用了CD-20建构体系，这也是他们在“编钟”办公楼的建设过程中所运用的体系。为办公楼创造独特的几何立面的灵感源自于建筑事务所一直倡导的多元化设计风格的宗旨。基于此，在设计实践阶段，建筑师对立面进行

了简化和细化处理。建筑师最初的设想是将立面设计成立体钻石形，但由于工期的关系而最终无法实现这一方案。尽管如此，另一套极为与众不同的立面方案却得以实施，其独特而醒目的外观得益于连续的三角形图案。

三角形覆盖建筑的上部分，并决定了整栋办公楼的外观。通过使立面上有色与透明的三角形玻璃交替排列，从而达到EPS对半封闭半敞开的要求。开放式的建筑设计理念使工作人员能够看到整个楼层，给人以愉悦、宽敞的感觉。建筑师极为重视

对立面细节的打磨：外墙构件是由层压木和铝框架构成的 $3.6\text{m} \times 3.6\text{m}$ 预制构件。

因为各预制构件间保持了相同的间距，所以整个外墙立面上的每条对角线都是笔直连续的。这说明建筑立面的构成品格外优秀。预制构件是带铝框架和铝质玻璃压条的层压木构件，其余部分则镶嵌玻璃：为敞开区域而设的无色光照控制玻璃和为封闭区域而设的有色玻璃。有色玻璃的内侧还覆有带松木薄板的60mm保温隔热层。建筑是商业化外表和温室室内的有机结合。

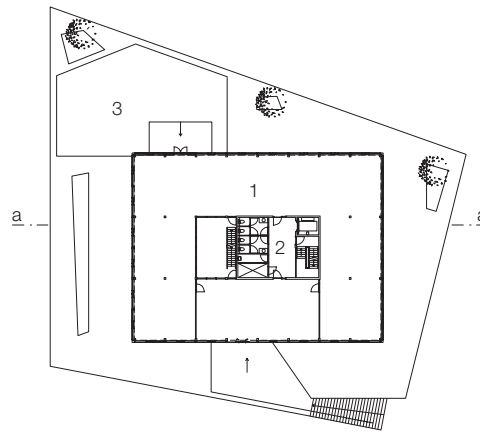
赵敏 译 / 方栢 审

一层平面图
比例 1 : 900
剖面图
比例 1 : 500

- 1 办公区
- 2 电梯/楼梯/洗手间
- 3 停车场巴蒂木楼面板

Ground floor plan
Scale 1 : 900
Section
Scale 1 : 500

- 1 office
- 2 elevators / stairs / toilets
- 3 wooden deck Bilinga



Simple, bright office building at an attractive but awkward, tight, trapezium-shaped location. The main focus in the design brief was to integrate the landscape, parking, basement and parking deck. This means the building floats on a green pedestal, and the cars are hidden from view.

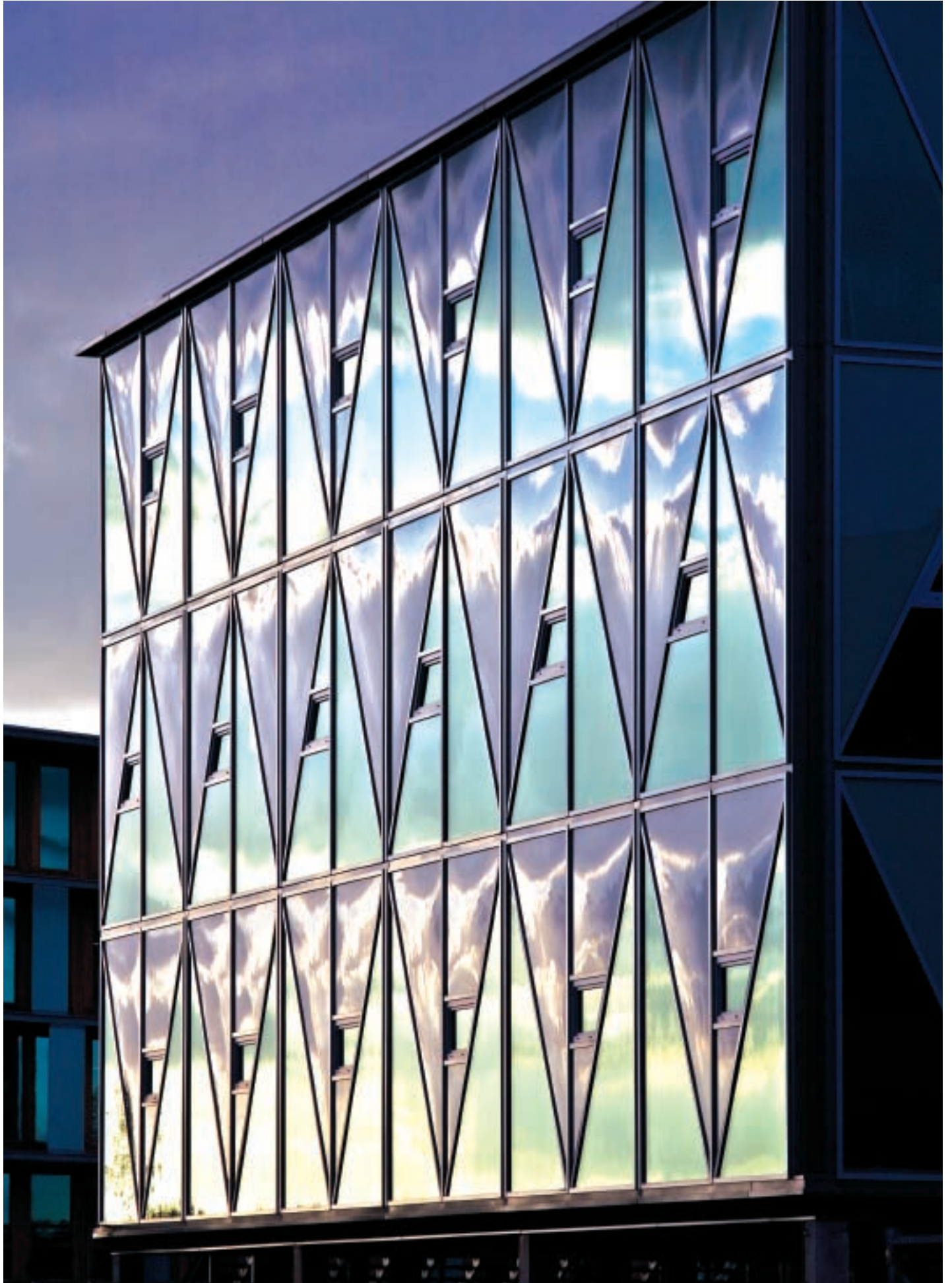
In view of the exceptionally short realization period, the architects have elected to use the CD-20 construction system, which they also applied in the "Maximus" building. The impetus for the exceptional geometric facade came from the multiple order won by their firm; this was then simplified and detailed in the design realized. The original facade was conceived as a 3D diamond

shape, but there was insufficient time for the engineering of this. Nevertheless, a highly individual facade has been created, which is striking thanks to its consistent triangular shape.

The triangle covers the whole upper storey and determines the look of the entire building. The requirement for this to be 50% open and 50% closed in order to comply with the EPS has been fulfilled by making the triangles alternately open and closed. The open base ensures someone of a free view from the workstation across the entire floor area. This gives a very pleasant, spacious feel. A great deal of attention has been devoted to the details: the exterior wall

elements have been prefabricated in 3.6m x 3.6m sections and consist of aluminium frames on laminated wood.

By keeping the distance between the elements everywhere the same, the diagonals run in one continuous line through the entire exterior wall surface. This means the graphical quality is exceptionally high. The elements consist of a laminated wood structure with aluminium frames and aluminium glazing beads. These are filled with glass: neutral solar-control glazing for the open sections and coloured glass for the closed sections. These are filled with 60mm insulation with a pinewood sheet on the inside. Businesslike exterior, warm interior.





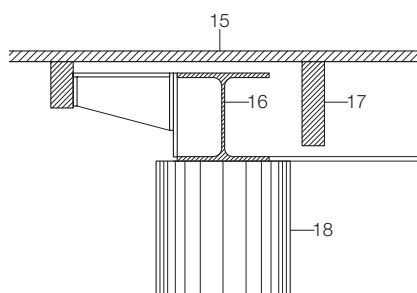
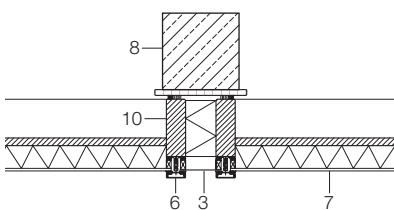
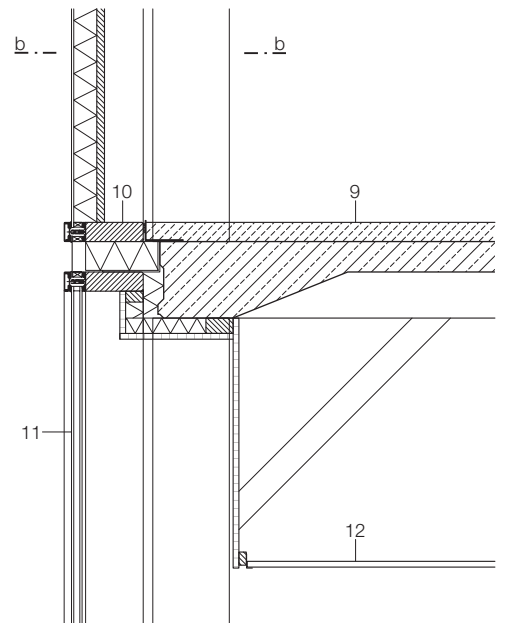
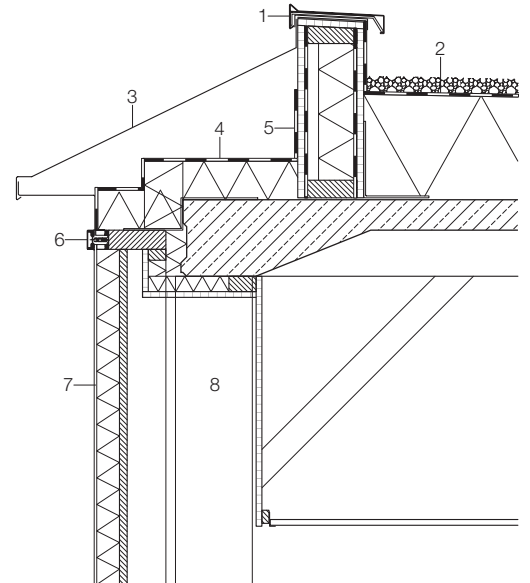
aa

穿过立面的垂直剖面·水平剖面
比例 1:20

- 1 2mm铝屋顶盖板
- 2 3mm沥青屋面密封层
- 260mm保温隔热层
- 3 2mm铝板
- 4 隔汽层
- 100mm保温隔热层
- 200mm预制混凝土楼板
- 50mm保温隔热层
- 18mm胶合板
- 5 隔汽层
- 18mm胶合板
- 防水层
- 架空
- 100mm保温隔热层
- 隔汽层
- 18mm胶合板
- 6 3mm铝罩板
- 7 6mm有色玻璃
- 60mm保温隔热层
- 19mm松木板
- 8 200mm × 200mm预制混凝土
- 9 50mm水泥砂浆楼板
- 10 50mm × 157mm松木窗框
- 80mm保温隔热层
- 11 双层玻璃：8mm安全玻璃 + 16mm空腔 + 8mm安全玻璃
- 12 22mm天花板
- 13 60mm水泥砂浆楼板
- 100mm矿棉保温隔热层
- 14 60mm保温隔热层
- 15 28mm × 145mm巴蒂木楼面板
- 16 HE 240A型钢
- 17 59mm × 220mm巴蒂木梁
- 18 350mm钢筋混凝土

Vertical · Horizontal sections through facade
Scale 1:20

- 1 2mm aluminium hood
- 2 3mm bitumen sealant
- 260mm insulation
- 3 2mm aluminium panel
- 4 vapour barrier
- 100mm insulation
- 200mm concrete prefab floor
- 50mm insulation
- 18mm plywood
- 5 vapour barrier
- 18mm plywood
- waterproof foil
- void
- 100mm insulation
- vapour barrier
- 18mm plywood
- 6 3mm aluminium cover
- 7 6mm colour glass
- 60mm insulation
- 19mm pine panel
- 8 200mm × 200mm concrete prefab
- 9 50mm sand cement floor
- 10 50mm × 157mm pine window frame
- 80mm insulation
- 11 double glazing: 8mm safety glass + 16mm cavity + 8mm safety glass
- 12 22mm ceiling
- 13 60mm sand cement floor
- 100mm insulation mineral wool
- 14 60mm insulation
- 15 28mm × 145mm wooden deck Bilinga
- 16 HE 240A
- 17 59mm × 220mm Bilinga beam
- 18 350mm reinforced concrete



bb

